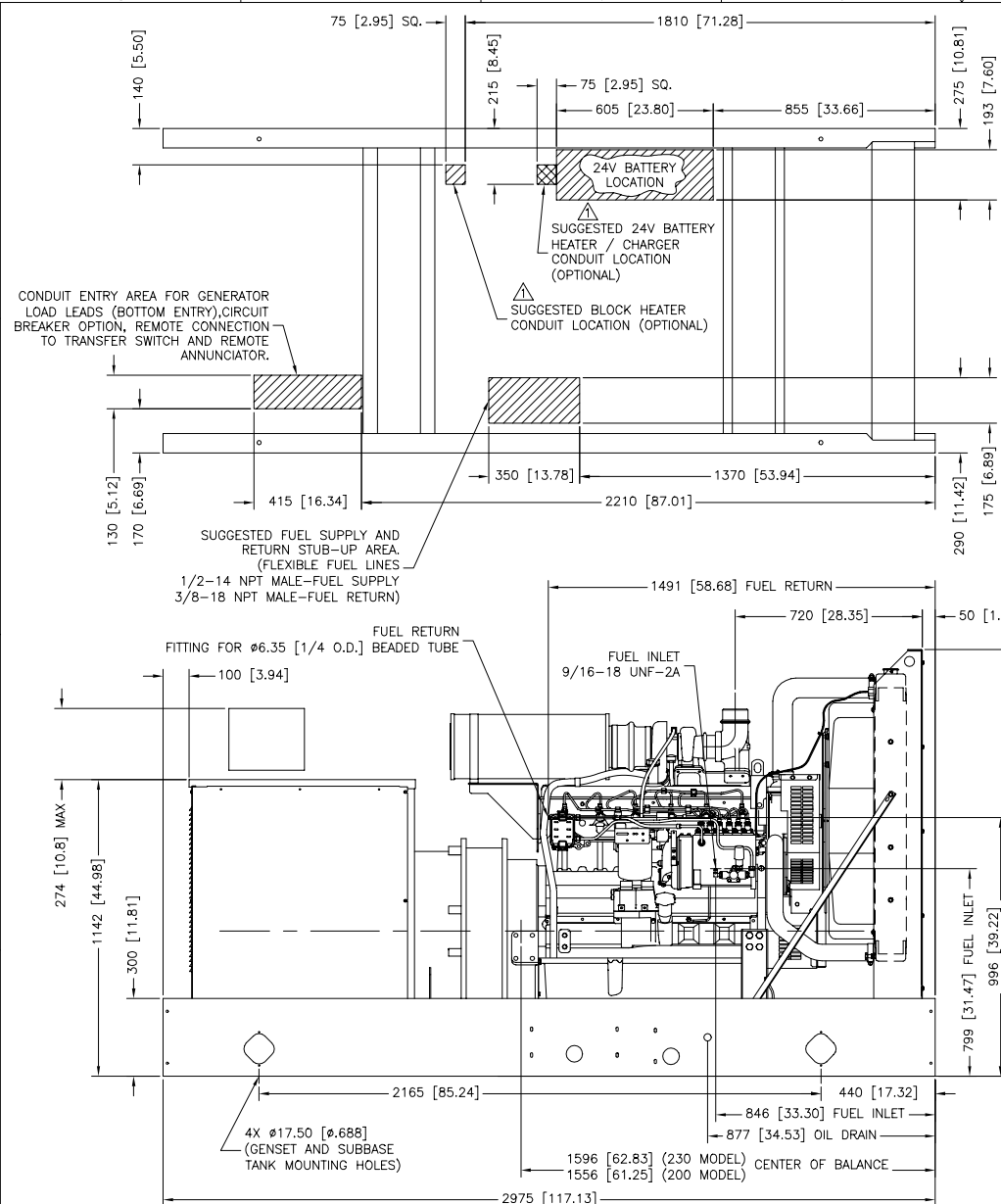
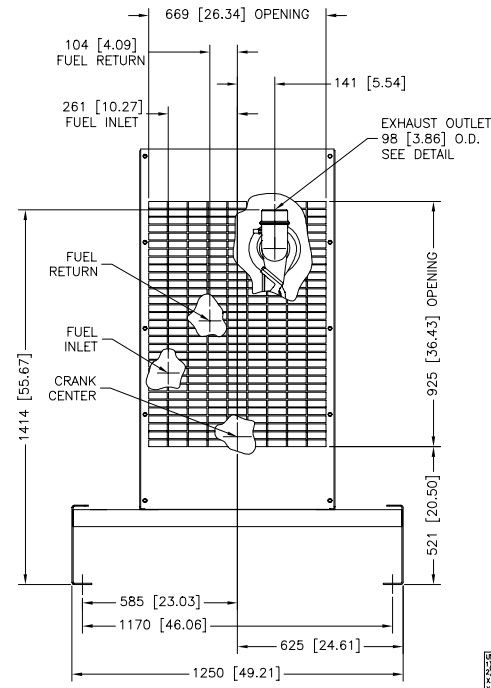
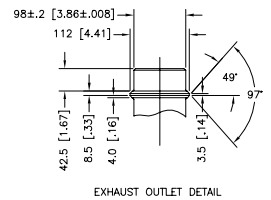


REV	DATE	REVISION	BY
G	5-22-03	(A-2) 521 WAS 536 (230 MODEL), 596 (200 MODEL), (B-2)	
		745 (200 MODEL) REMOVED, (C-3) 669 WAS 1044 (230 MODEL)	
		670 (200 MODEL) AND VIEWS UPDATED. [69415]	RAC
H	11-12-03	SEE SHEET 3 OF 3. [70918]	RAC
J	12-17-04	(B-7) FUEL RETURN CONNECTION CLARIFIED [73954]	SAM
K	4-14-05	(A-5) 877 WAS 1285 [72346]	SAM
L	9-7-05	SEE SHEET 3 [75122]	SAM



INSTALLATION NOTE
IF SUBBASE FUEL TANK AND/OR SOUND HOUSING IS USED, REFER TO SUBBASE FUEL TANK ADV TO DETERMINE MOUNTING LOCATIONS.



- NOTES:
- WHEN SUBBASE TANK IS USED, CONDUIT MUST BE LOCATED OUTSIDE OF TANK AREA OR IN STUB-UP AREA FOR SUBBASE TANK. REFER TO SUBBASE ADV.
 - DIMENSIONS IN [] ARE ENGLISH EQUIVALENTS.
 - IF AN ENCLOSURE IS USED THE FUEL LINE MUST BE STUBBED UP FROM DIRECTLY UNDER THE UNIT OR BROUGHT IN FROM THE END OF THE SKID. REFER TO ENCLOSURE ADV.
 - MAXIMUM WET WEIGHT OF GENSET:
200: 2059 KG [4540 LBS]
230: 2250 KG [4960 LBS]

METRIC CAD FILE

200 MODEL 4U9
230 MODEL 4U10/4U13
RECONNECTABLE
IMPROVED MOTOR STARTING (IMS) RECON., & 600V ALTERNATORS
JOHN DEERE 6081AF

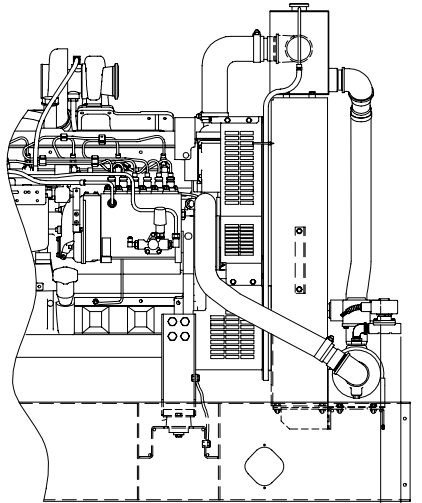
KOHLER CO.
POWER SYSTEMS, KOHLER, WI 53044 U.S.A.
THIS DRAWING IS DESIGN AND DRAWING PROPERTY OF KOHLER CO. PROPERTY AND SHALL NOT BE USED WITHOUT THE WRITTEN PERMISSION OF KOHLER CO. ALL RIGHTS OF DESIGN OR INVENTION ARE RESERVED.

TITLE
DIMENSION PRINT

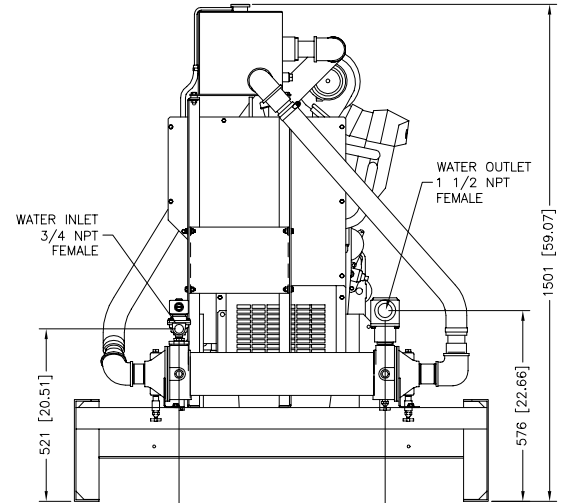
NO.	APPROVALS	DATE
1	BTW	8-30-01
2	MRS	8-24-01
3	MRS	8-24-01

SCALE: 1:2X
DWG NO: ADV6646A.DWG
SHEET 1-3
REV. NO:
PLOTTED DATE: ADV-6646

REV	DATE	REVISION	BY
F	2-13-03	SEE SHEET 1 OF 3. [68926]	GFR
G	5-22-03	(A-4) 395 WAS 412, (A-5) 477 WAS 552, (B-3) 501 WAS 473, (A-6) WAS 1425. [68415]	RAC
H	11-12-03	SEE SHEET 3 OF 3. [70918]	RAC
J	12-17-04	SEE SHEET 1 [73954]	SAM
K	4-14-05	SEE SHEET 1 [72340]	SAM
L	9-7-05	SEE SHEET 3 [75122]	SAM



28 [1.12] INLET
89 [3.52] OUTLET

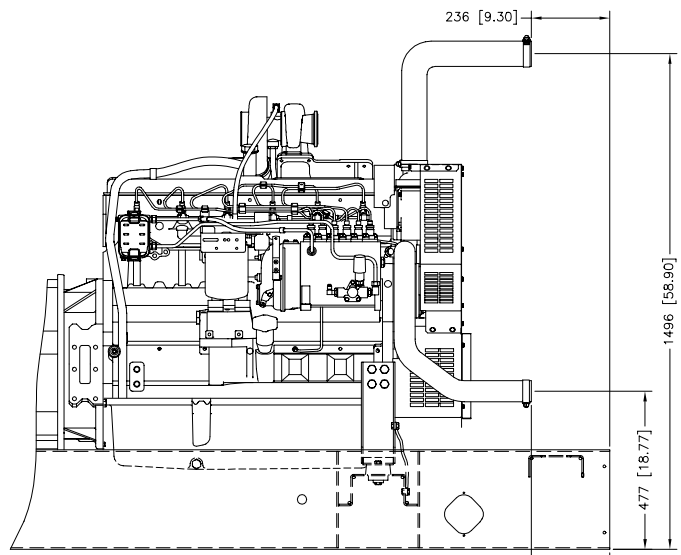


WATER INLET
3/4 NPT
FEMALE

WATER OUTLET
1 1/2 NPT
FEMALE

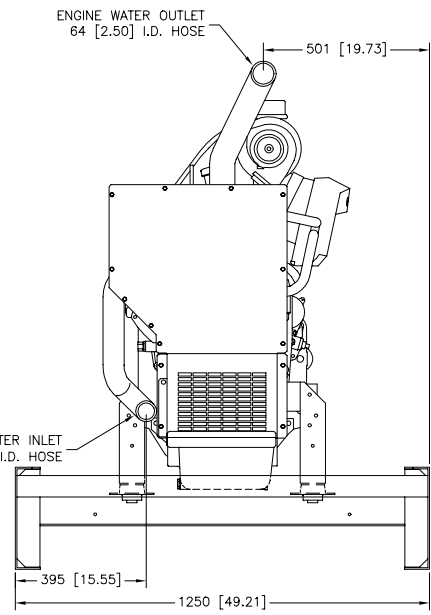
1501 [59.07]
521 [20.51]
576 [22.66]
316 [12.44]
1250 [49.21]
312 [12.27]

CITY WATER COOLED



236 [9.30]
1496 [58.90]
477 [18.77]
236 [9.30]

REMOTE RADIATOR SET-UP



ENGINE WATER OUTLET
64 [2.50] I.D. HOSE

501 [19.73]

ENGINE WATER INLET
51 [2.00] I.D. HOSE

395 [15.55]
1250 [49.21]

METRIC CAD FILE

NOTE: DIMENSIONS IN [] ARE ENGLISH EQUIVALENTS.

UNLESS OTHERWISE SPECIFIED:
1) DIMENSIONS ARE IN MILLIMETERS
2) TOLERANCES ARE:
H & K ± 0.25 SURFACE FINISH
M ± 1.0 ✓ MAX.
ANGLES ± 0.50°

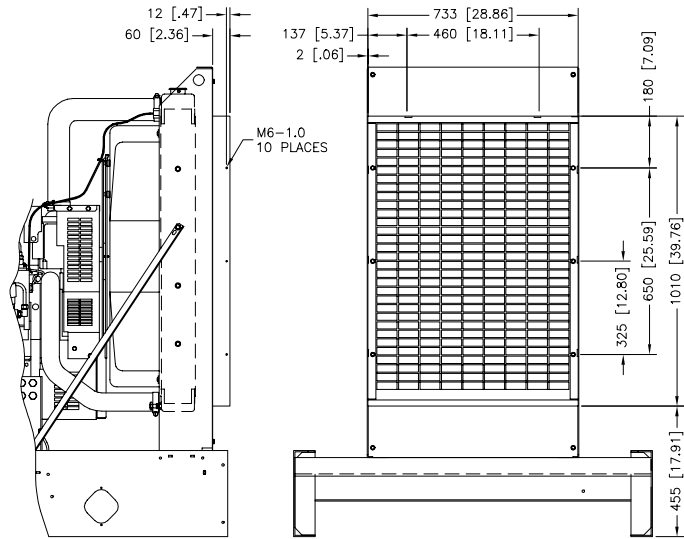
KOHLER CO.
POWER SYSTEMS, KOHLER, WI 53044 U.S.A.
THIS DRAWING IS DESIGN AND TRADE SE PROPERTY AND
SHOULD NOT BE USED WITHOUT THE CONSENT OF KOHLER CO. WORK
ALL RIGHTS OF DESIGN OR INVENTION ARE RESERVED.

DIMENSION PRINT

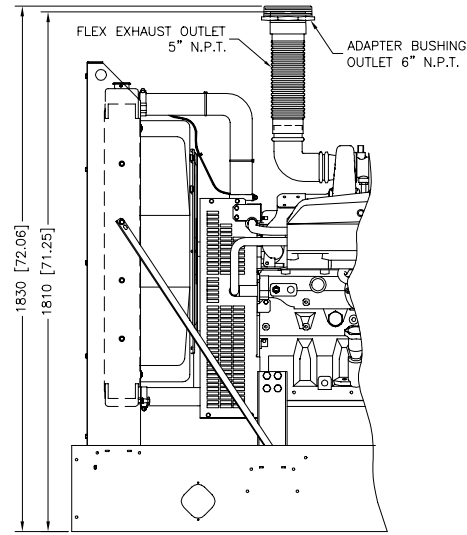
DESIGNED BY	DATE	TITLE
DRAWN BY	DATE	
CHECKED BY	DATE	
APPROVED BY	DATE	

SCALE: 1:15X
DWG NO: ADV6646B.DWG
SHEET 2-3
REV. NO:
PLOTTED DATE: ADV-6646

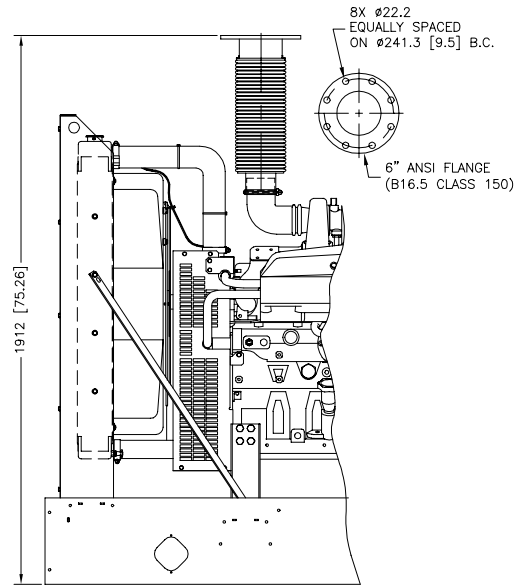
200 MODEL 4UA9
230 MODEL 4UA10/4UA13
RECONNECTABLE
IMPROVED MOTOR STARTING (IMS) RECON., & 600V ALTERNATORS
JOHN DEERE 6081AF



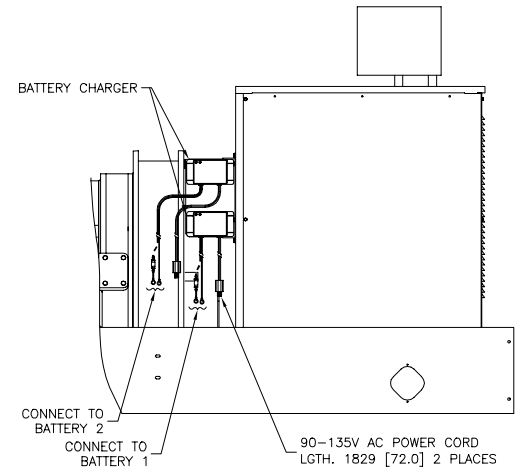
RADIATOR DUCT FLANGE



FLEXIBLE EXHAUST



BLOCK HEATER 120 AND 240 VOLT



BATTERY CHARGER

METRIC CAD FILE

NOTE: DIMENSIONS IN [] ARE ENGLISH EQUIVALENTS.

UNLESS OTHERWISE SPECIFIED:		REVISION		BY	
1) DIMENSIONS ARE IN MILLIMETERS		H	11-12-03	(A-3/B-5) FLEXIBLE EXHAUST W/FLANGE VIEW ADDED. [70818]	RAC
2) TOLERANCES ARE:		J	12-17-04	SEE SHEET 1 [73954]	SAM
K & L \pm 0.25		K	4-14-05	SEE SHEET 1 [72346]	SAM
M \pm 1.0		L	9-7-05	(0-7) DUCT VIEW UPDATED [75122]	SAM
N \pm 1.5					
ANGLES \pm 0.50°					
SURFACE FINISH					
MAX. <input checked="" type="checkbox"/>					
DRAWN		DATE	TITLE		
APPROVES	DATE	SCALE		SHEET	
ETW	8-7-01	.13X		ADV6646C.DWG	3-3
CHECKED	MRS	8-24-01	REV. NO.		
APPROVED	MRS	8-24-01	ADV-6646		D
PLOTTED DATE					

200 MODEL 4UA9
230 MODEL 4UA10/4UA13
RECONNECTABLE
IMPROVED MOTOR STARTING (IMS) RECON., & 600V ALTERNATORS
JOHN DEERE 6081AF