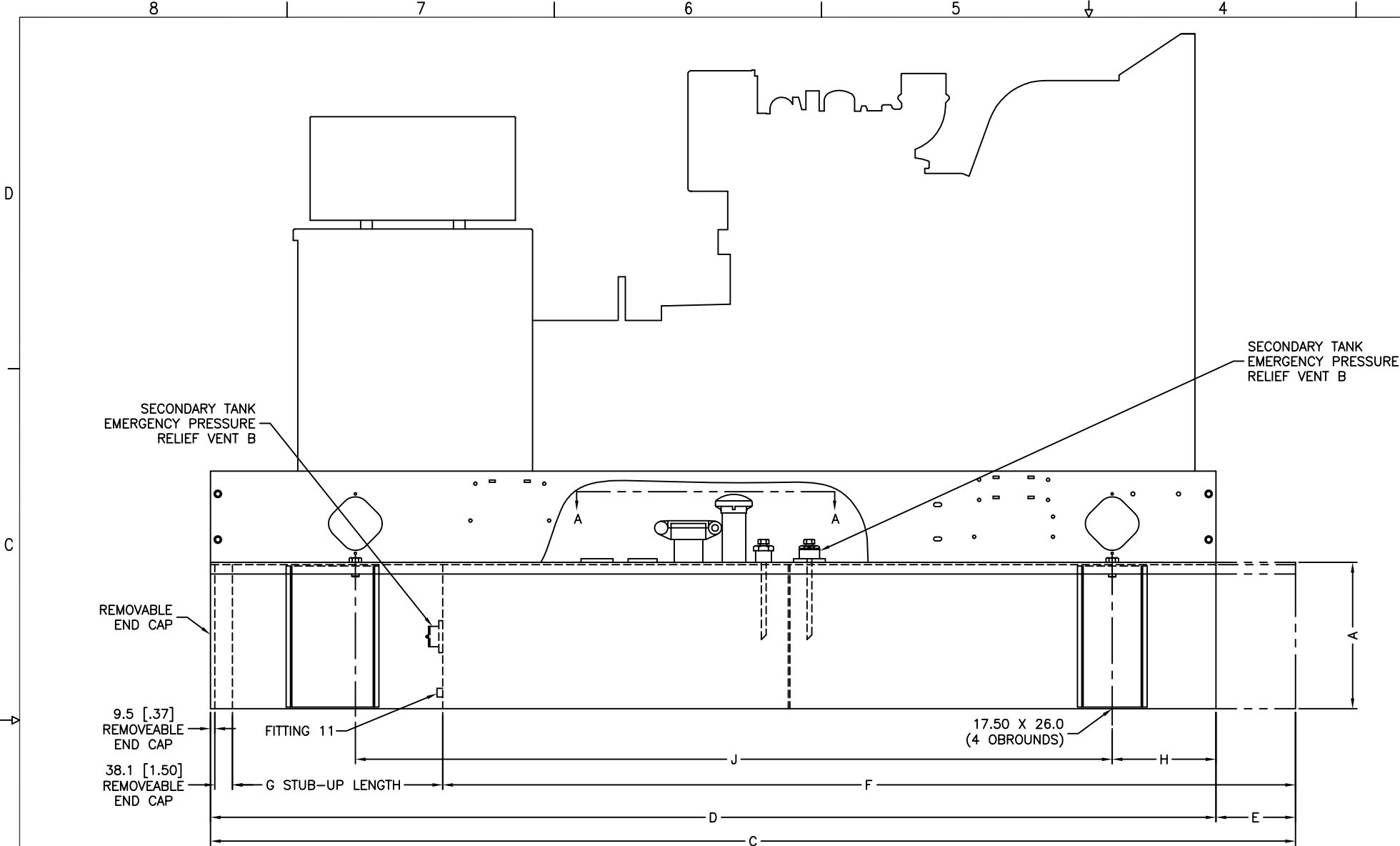
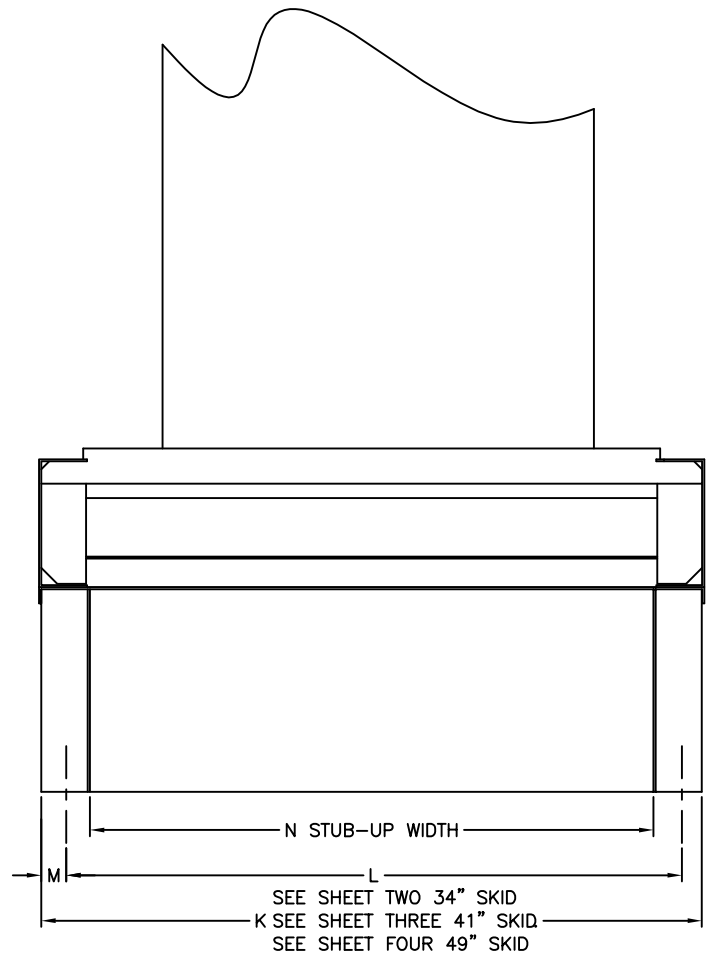


REV	DATE	REVISION	BY
J	2-21-06	SEE SHEET 4 OF 4. [77092]	RAC
K	11-16-06	(A-5) TYPE II ADDED, SEE SHEET 4 [79921]	SAM
L	2-13-07	(B-2) 49" SKID SHEET FOUR WAS THREE, (A-4) 152.4 [6.00] ADDED. [79737]	RAC
M	8-21-08	(B-1) SEISMIC NOTE ADDED [86012]	SAM

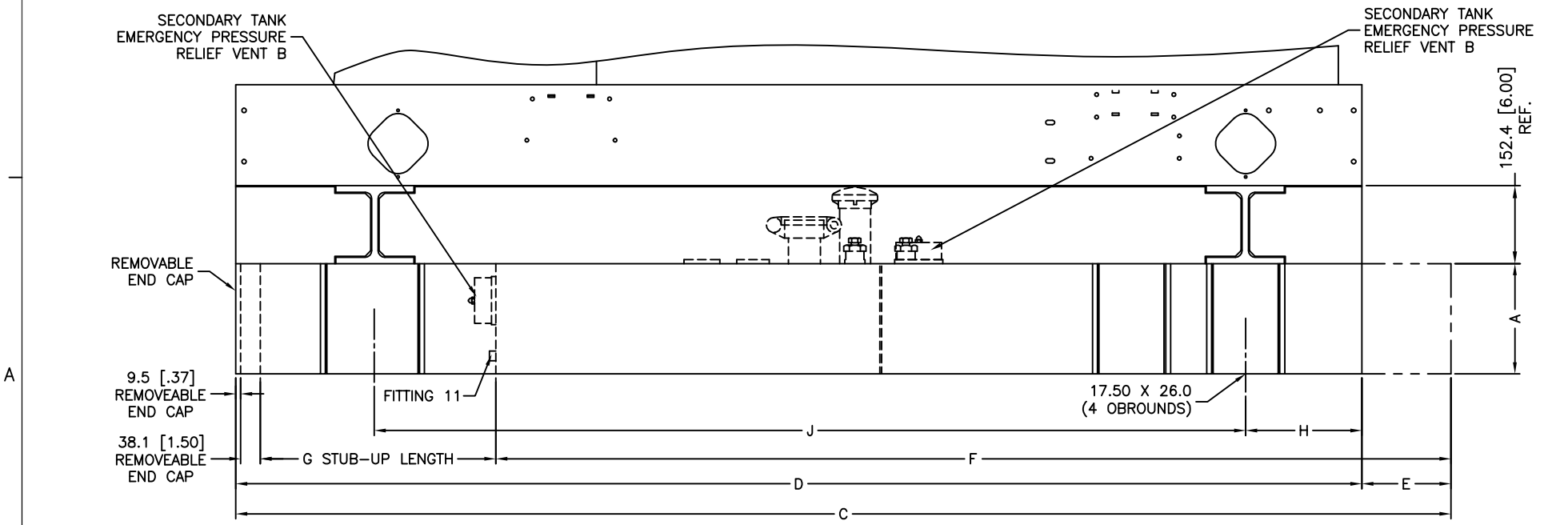


TYPE I

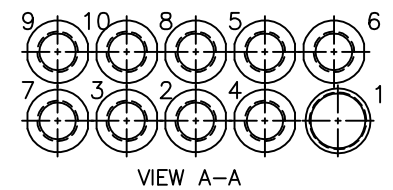


NOTE: IF IBC CERTIFICATION IS REQUIRED SEE SEISMIC ADV FOR INSTALLATION INSTRUCTIONS

- FITTINGS:
1. "B" NPT EMERG. VENT PER NFPA 30
 2. 2" NPT RAISED MANUAL FILL CAP W/(2" RISER)
 3. 2" NPT LEVEL GAUGE
 4. 1 1/4" NPT NORMAL VENT W/5" RISER & MUSHROOM CAP
 5. 3/8" DIP TUBE WITH CHECK VALVE, "P" NPT (FEMALE) CUSTOMER CONNECTION-FUEL SUPPLY
 6. 3/8" DIP TUBE, "P" NPT (FEMALE) CUSTOMER CONNECTION-FUEL RETURN
 7. 2" NPT W/LOW LEVEL SWITCH
 8. 2" NPT FOR SENSOR/PUMP CONTROL FLOAT
 9. 1" NPT FOR OVERFLOW (2 GPM PUMP MAX)
 10. 1" NPT FOR TANK FILL
 11. 1/2" NPT FOR LEAK DETECTION SWITCH



TYPE II



20-275 MODELS
DOUBLE WALL SECONDARY CONTAINMENT
SUBBASE FUEL TANKS
JOHN DEERE, TIER I, II & III

METRIC CAD FILE

DIMENSIONS IN [] ARE ENGLISH EQUIVALENTS

UNLESS OTHERWISE SPECIFIED - 1) DIMENSIONS ARE IN MILLIMETERS 2) TOLERANCES ARE: X.XX ± X ± ANGLES ±		SURFACE FINISH MAX.	
THIRD ANGLE PROJECTION		TITLE	
APPROVALS		DATE	
DRAWN	SAM	11-25-03	SCALE
CHECKED	CWF	11-25-03	DWG. NO.
APPROVED	CWF	11-25-03	ADV-6912
DRAWING NO.		SHEET 1-4	
PLOTTED DATE		1	

8 7 6 5 4 3 2 1

D

D

C

C

B

B

B

B

A

A

8 7 6 5 4 3 2 1

MODEL	CAPACITY		WEIGHT		HEIGHT		E-VENT NPT	TANK LENGTH		SKID LENGTH		E		F		STUB-UP LENGTH G		H		J		K		L		M		N		P	TYPE
	LITERS	GAL	Kg	lbs	MM	IN		MM	IN	MM	IN	MM	IN	MM	IN	MM	IN	MM	IN	MM	IN	MM	IN	MM	IN	MM	IN	MM	IN		
20 MODEL TIER I & II	291	77	316	696	305	12.0	2	2000.0	78.74	2000.0	78.74	0.0	0.00	1542.8	60.74	409.6	16.13	250.0	9.84	1533.0	60.35	1040.0	40.94	965.0	37.99	37.5	1.48	887.6	34.94	3/8 NPT	
	450	119	382	843	457	18.0	3																								
	613	162	449	989	610	24.0	3																								
	772	204	515	1136	762	30.0	3																								
30 MODEL TIER I & II	291	77	316	696	305	12.0	2	2000.0	78.74	2000.0	78.74	0.0	0.00	1542.8	60.74	409.6	16.13	250.0	9.84	1533.0	60.35	1040.0	40.94	965.0	37.99	37.5	1.48	887.6	34.94	3/8 NPT	
	450	119	382	843	457	18.0	3																								
	613	162	449	989	610	24.0	3																								
	935	247	582	1283	914	36.0	3																								
40 MODEL TIER I & II	291	77	316	696	305	12.0	2	2000.0	78.74	2000.0	78.74	0.0	0.00	1542.8	60.74	409.6	16.13	250.0	9.84	1533.0	60.35	1040.0	40.94	965.0	37.99	37.5	1.48	887.6	34.94	3/8 NPT	
	450	119	382	843	457	18.0	3																								
	613	162	449	989	610	24.0	3																								
	935	247	582	1283	914	36.0	3																								
50 MODEL TIER I & II	337	89	345	761	305	12.0	2	2200.0	86.61	2200.0	86.61	0.0	0.00	1742.8	68.61	409.6	16.13	227.0	8.94	1656.0	65.20	1040.0	40.94	965.0	37.99	37.5	1.48	887.6	34.94	3/8 NPT	
	522	138	416	917	457	18.0	3																								
	712	188	486	1072	610	24.0	3																								
	897	237	557	1228	762	30.0	3																								
60 MODEL TIER I & II	1272	336	683	1505	762	30.0	4	2800.0	110.24	2200.0	86.61	0.0	0.00	1742.8	68.61	409.6	16.13	227.0	8.94	1656.0	65.20	1040.0	40.94	965.0	37.99	37.5	1.48	887.6	34.94	3/8 NPT	
	337	89	345	761	305	12.0	2																								
	522	138	416	917	457	18.0	3																								
	712	188	486	1072	610	24.0	3																								
80 MODEL TIER I	1083	286	628	1384	914	36.0	3	2800.0	110.24	2200.0	86.61	0.0	0.00	1742.8	68.61	409.6	16.13	227.0	8.94	1656.0	65.20	1040.0	40.94	965.0	37.99	37.5	1.48	887.6	34.94	3/8 NPT	
	1499	396	761	1678	914	36.0	4																								
	337	89	345	761	305	12.0	2																								
	712	188	486	1072	610	24.0	3																								
80/100 MODELS TIER II & III	897	237	557	1228	762	30.0	3	2800.0	110.24	2400.0	94.49	0.0	0.00	1942.8	76.49	409.6	16.13	227.0	8.94	1856.0	73.07	1040.0	40.94	965.0	37.99	37.5	1.48	887.6	34.94	3/8 NPT	
	1272	336	683	1505	762	30.0	4																								
	1874	495	877	1934	914	36.0	4																								
	337	89	345	761	305	12.0	2																								
100/125 MODELS TIER I	1272	336	683	1505	762	30.0	4	3302.0	130.00	2600.0	102.36	0.0	0.00	2142.8	84.36	409.6	16.13	227.0	8.94	2056.0	80.94	1040.0	40.94	965.0	37.99	37.5	1.48	887.6	34.94	3/8 NPT	
	1874	495	877	1934	914	36.0	4																								
	2627	694	1109	2446	914	36.0	5																								
	432	114	404	891	305	12.0	3																								
135 MODEL TIER II & 125 MODEL TIER III	908	240	562	1239	610	24.0	3	2600.0	102.36	2800.0	110.24	0.0	0.00	2342.8	92.24	409.6	16.13	430.0	16.93	2165.0	85.24	1040.0	40.94	965.0	37.99	37.5	1.48	887.6	34.94	3/8 NPT	
	1385	366	720	1587	914	36.0	4																								
	1874	495	877	1934	914	36.0	4																								
	2627	694	1109	2446	914	36.0	5																								
150 MODEL TIER I, II & III	742	196	517	1139	457	18.0	3	2800.0	110.24	2800.0	110.24	0.0	0.00	2342.8	92.24	409.6	16.13	430.0	16.93	2165.0	85.24	1040.0	40.94	965.0	37.99	37.5	1.48	887.6	34.94	3/8 NPT	
	1272	336	683	1505	762	30.0	4																								
	1874	495	877	1934	914	36.0	4																								
	2249	594	993	2190	914	36.0	5																								
180 MODEL TIER I	3388	895	1593	3513	914	36.0	5	5436.0	214.00	2800.0	110.24	0.0	0.00	2342.8	92.24	409.6	16.13	430.0	16.93	2165.0	85.24	1040.0	40.94	965.0	37.99	37.5	1.48	887.6	34.94	3/8 NPT	
	742	196	517	1139	457	18.0	3																								
	1537	406	766	1688	914	36.0	4																								
	2249	594	993	2190	914	36.0	5																								
180 MODEL TIER II	2627	694	1109	2446	914	36.0	5	6198.0	244.00	2800.0	110.24	0.0	0.00	2342.8	92.24	409.6	16.13	430.0	16.93	2165.0	85.24	1040.0	40.94	965.0	37.99	37.5	1.48	887.6	34.94	3/8 NPT	
	3944	1042	1814	4000	914	36.0	5																								
	742	196	517	1139	457	18.0	3																								
	1537	406	766	1688	914	36.0	4																								
180 MODEL TIER II	1874	495	877	1934	914	36.0	4	3302.0	130.00	2800.0	110.24	502.0	19.76	2844.8	112.00	409.6	16.13	430.0	16.93	2165.0	85.24	1040.0	40.94	965.0	37.99	37.5	1.48	887.6	34.94	3/8 NPT	
	2627	694	1109	2446	914	36.0	5																								
	3944	1042	1814	4000	914	36.0	5																								
	742	196	517	1139	457	18.0	3																								

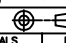
METRIC CAD FILE

UNLESS OTHERWISE SPECIFIED - 1) DIMENSIONS ARE IN MILLIMETERS 2) TOLERANCES ARE: X.XX ± 0.25 SURFACE FINISH X.X ± 1.0 ✓ MAX. X ± 1.5 ANGLES ± 0°30'		KOHLER CO. POWER SYSTEMS, KOHLER, WI 53044 U.S.A. THIS DRAWING, IN DESIGN AND DETAIL, IS KOHLER CO. PROPERTY AND MUST NOT BE USED EXCEPT IN CONNECTION WITH KOHLER CO. WORK. ALL RIGHTS OF DESIGN OR INVENTION ARE RESERVED.	
DIMENSION PRINT APPROVALS: _____ DATE: _____ DRAWN: SAM 11-25-03 CHECKED: CWF 11-25-03 APPROVED: CWF 11-25-03		TITLE: DIMENSION PRINT SCALE: / / / CAD NO.: ADV6912C.DWG SHEET: 3-4 DWG. NO.: ADV-6912 D PLOTTED DATE:	

20-180 MODELS, 41" SKID
DOUBLE WALL SECONDARY CONTAINMENT
JOHN DEERE, TIER I, II & III SUBBASE FUEL TANKS

MODEL	CAPACITY		WEIGHT		HEIGHT		E-VENT		TANK LENGTH		SKID LENGTH		E		F		STUB-UP LENGTH G		H		J		K		L		M		N		P	TYPE	REV	DATE	REVISION	BY
	LITERS	GAL	Kg	lbs	MM	IN	NPT	MM	IN	MM	IN	MM	IN	MM	IN	MM	IN	MM	IN	MM	IN	MM	IN	MM	IN	MM	IN	MM	IN	MM						
200/230 TIER I 200 6068HF TIER II 180/200 TIER III	939	248	599	1320	457	18.0	3	2975.0	117.13			0.0	0.00	2365.5	93.13																		J	2-21-06	(C,D-8) MODELS 125 & 150 TIER III ADDED. [77092]	RAC
	1609	425	782	1724	762	30.0	4					479.0	18.87	2844.8	112.00	562.0	22.13	440.0	17.32	2165.0	85.24	1250.0	49.21	1170.0	46.06	40.0	1.57	1097.6	43.21	3/8 NPT		K	11-16-06	(D-2) TYPE II ADDED, SEE SHEET 1 [79921]	SAM	
	2347	620	992	2186	914	36.0	4	3454.0	136.00	2975.0	117.13	1292.0	50.87	3657.6	144.00																	L	2-13-07	(C,D-8) MODELS 125 & 150 TIER III MOVED TO SHEET 3, (D-2) 3/8 NPT WAS 1/2. [79737]	RAC	
	3096	818	1197	2638	914	36.0	5	4267.0	168.00			3019.0	118.87	5384.8	212.00																	M	8-21-08	SEE SHEET 1 [86012]	SAM	
230/250/275 MODELS TIER II & III	840	222	586	1292	460	18.0	3	3100.0	122.00			0.00	0.00	2300.0	90.55																					
	1794	474	869	1916	914	36.0	4	3100.0	122.00			0.00	0.00	2300.0	90.55	609.6	24.00			2165.0	85.24	1250.0	49.21	1170.0	46.06	40.0	1.57	1097.6	43.21	3/8 NPT						
	2782	735	1146	2526	914	36.0	5	4200.0	165.35	3100	122.00	1100.0	43.31	3396.6	133.72			565.0	22.24																	
	3655	966	1589	3503	914	36.0	5	4900.0	192.91			1800.0	70.87	4100.0	161.42					1585.0	62.40	1350.0	53.15	1248.5	49.15	50.8	2.0	1190.8	46.88							
	5526	1460	2038	4493	914	36.0	5	5100.0	200.79			2000.0	78.74	4300.0	169.29	800.0	31.50			1850.0	72.83	1748.5	68.83					1690.8	66.57							II

METRIC CAD FILE

UNLESS OTHERWISE SPECIFIED - 1) DIMENSIONS ARE IN MILLIMETERS 2) TOLERANCES ARE: X.XX ± 0.25 SURFACE FINISH X.X ± 1.0 / MAX. X ± 1.5 ANGLES ± 0°30'				KOHLER CO. POWER SYSTEMS, KOHLER, WI 53044 U.S.A. THIS DRAWING, IN DESIGN AND DETAIL, IS KOHLER CO. PROPERTY AND MUST NOT BE USED EXCEPT IN CONNECTION WITH KOHLER CO. WORK. ALL RIGHTS OF DESIGN OR INVENTION ARE RESERVED.	
APPROVALS		DATE		TITLE	
DRAWN SAM		11-30-04		DIMENSION PRINT	
CHECKED CWF		12-1-04		SCALE /// CAD NO. ADV6912D.DWG SHEET 4-4	
APPROVED CWF		12-1-04		DWG. NO. ADV-6912	
				PLOTTED DATE	

200/230/250/275 MODELS, 49" SKID
DOUBLE WALL SECONDARY CONTAINMENT
JOHN DEERE, TIER I, II & III SUBBASE FUEL TANKS