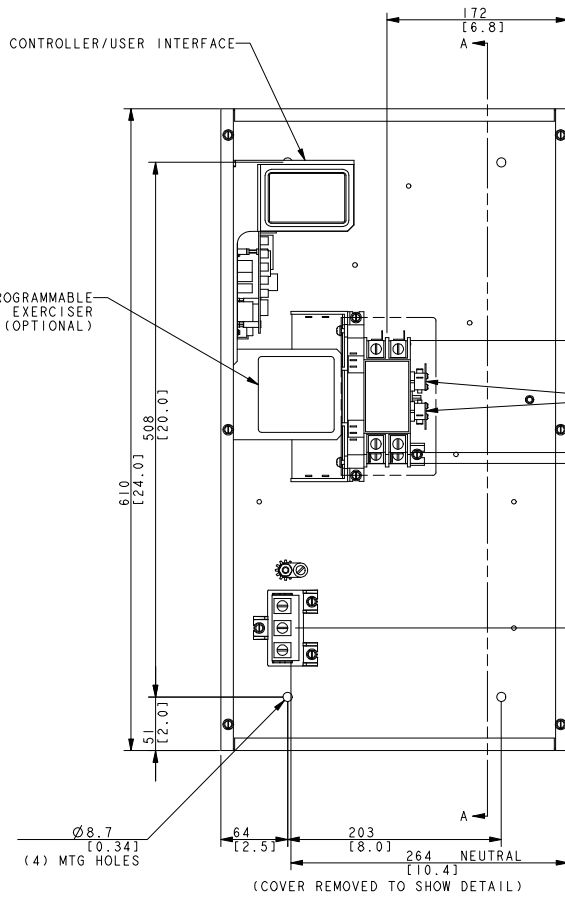
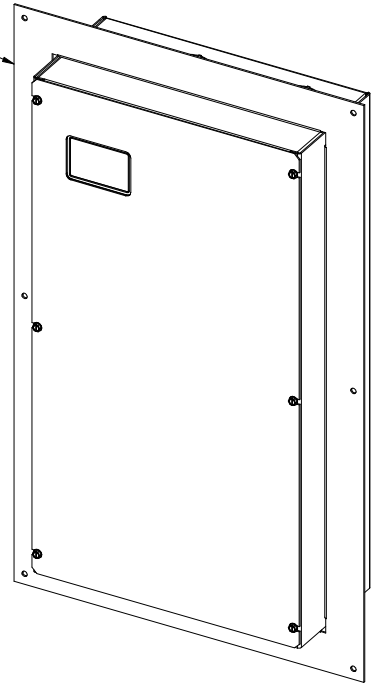


KNOCKOUTS FOR 1" & 1.25" CONDUIT
(2 TOP & BOTTOM)

KNOCKOUTS FOR .5" & .75" CONDUIT
(2 TOP & BOTTOM)

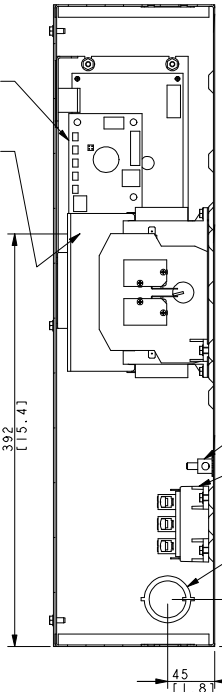
BEZEL (OPTIONAL)



ACCESSORY BOARD (OPTIONAL)

ENGINE START & CUSTOMER CONNECTIONS (ON CONTROLLER PC BOARD)

AUXILIARY CONTACTS (OPTIONAL)



SECTION A-A

SWITCH RATING (AMPS)	RANGE OF AL-CU WIRE SIZES		
	CONTACTOR	NEUTRAL	GROUND
100	ONE #12 TO 1/0 AWG	ONE #12 TO 1/0 AWG	ONE #14 TO #4 AWG

DIMENSIONS IN [] ARE INCHES.
FINISH: ANSI 49 GRAY.
REFER TO OPERATOR'S MANUAL PRIOR TO INSTALLATION AND OPERATION OF UNIT.
APPROXIMATE WEIGHT: 24 LBS [10.9 Kg]

REV	DATE	REVISION	BY	UNLESS OTHERWISE SPECIFIED - DIMENSIONS ARE IN MILLIMETERS
-	7-30-04	NEW DRAWING [73001]	WSD	
A	10-22-04	GENERIC BLOCK ADDED [73612]	WSD	
B	5-18-05	(B-3) #12 TO 1/0 WAS #14 TO 2/0 (2 PLACES)	WSD	
		[75159]	WSD	

APPROVALS	DATE
DRWN WSD	7-30-04
CHECKED WSD	7-30-04
APPROVED AJH	7-30-04

KOHLER CO. METRIC PRO-E
POWER SYSTEMS, KOHLER, WI 53044 U.S.A.
THIS DRAWING IN DESIGN AND DETAIL IS KOHLER CO. PROPERTY AND MUST NOT BE USED EXCEPT IN CONNECTION WITH KOHLER CO. WORK. ALL RIGHTS OF DESIGN OR INVENTION ARE RESERVED.

DIMENSION PRINT

SCALE: NONE CAD NO. SHEET 1 of 1
DWG NO. **ADV-6968** **D**

100A RESIDENTIAL ATS
MPAC 500 CONTROLLER
OPEN TRANSITION
NEMA 1 ENCLOSURE