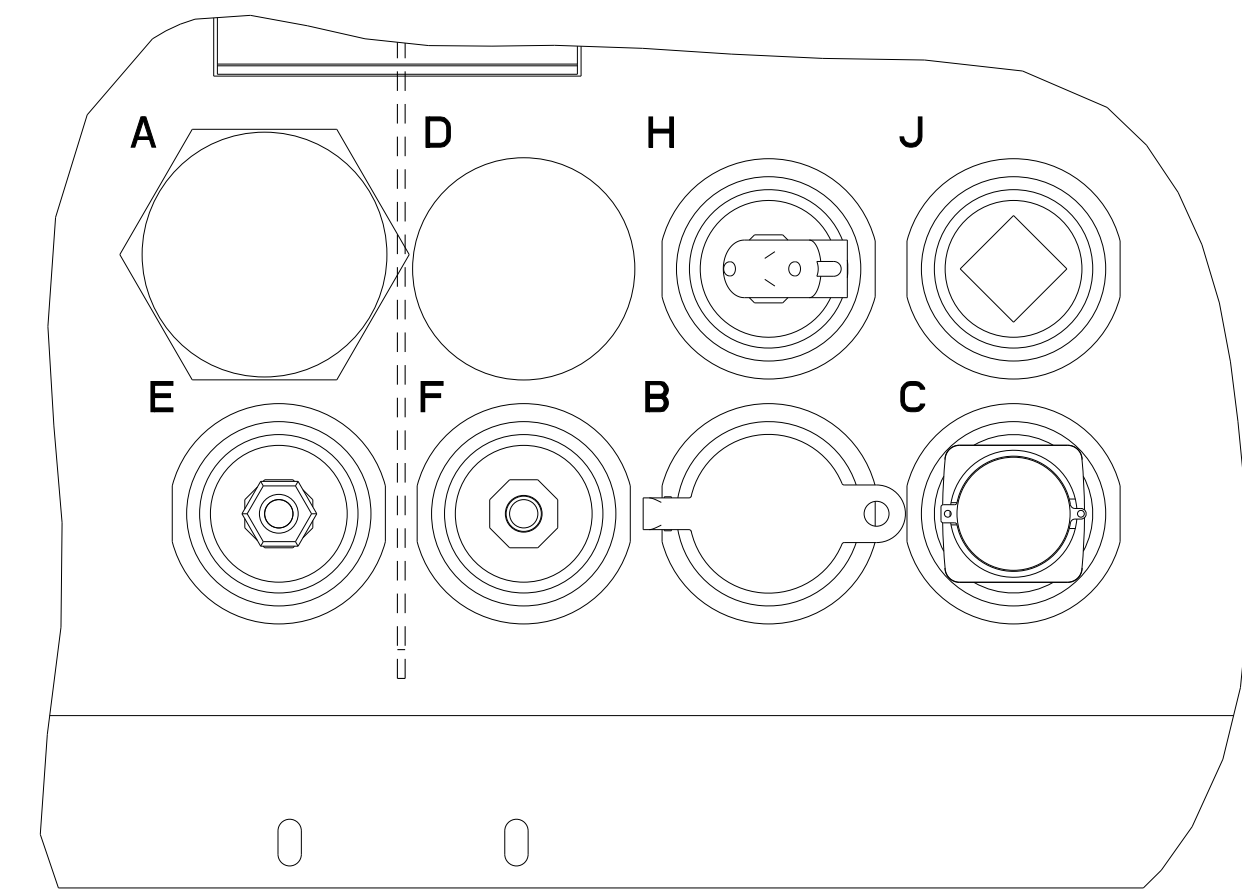
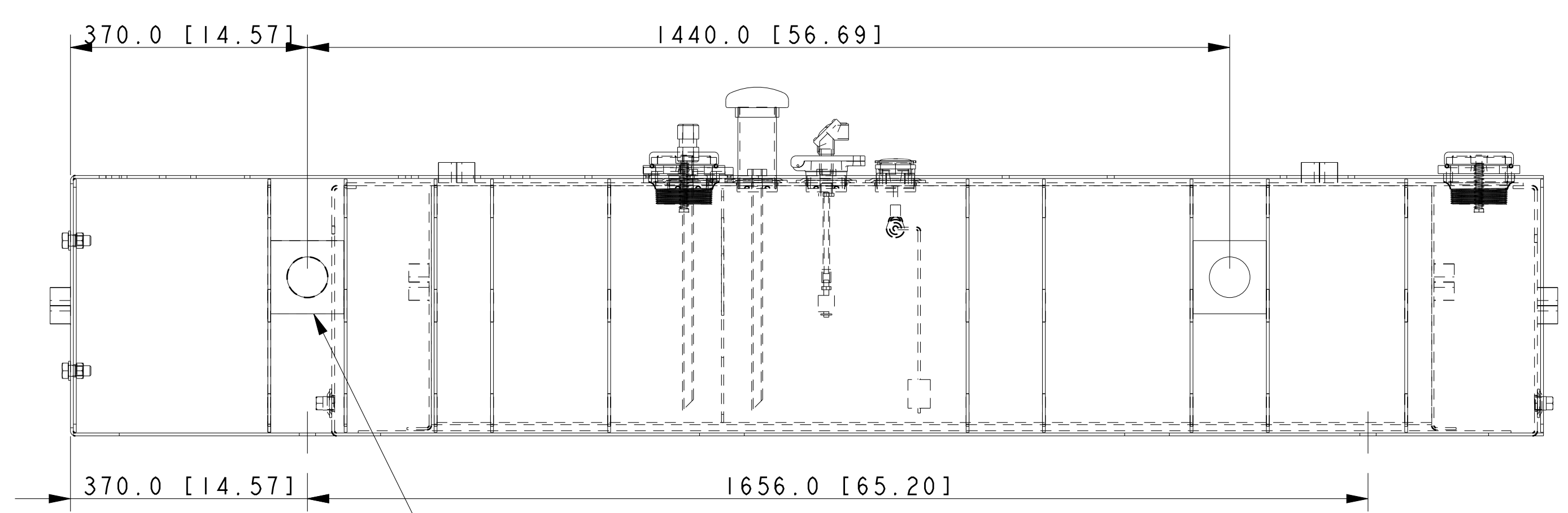
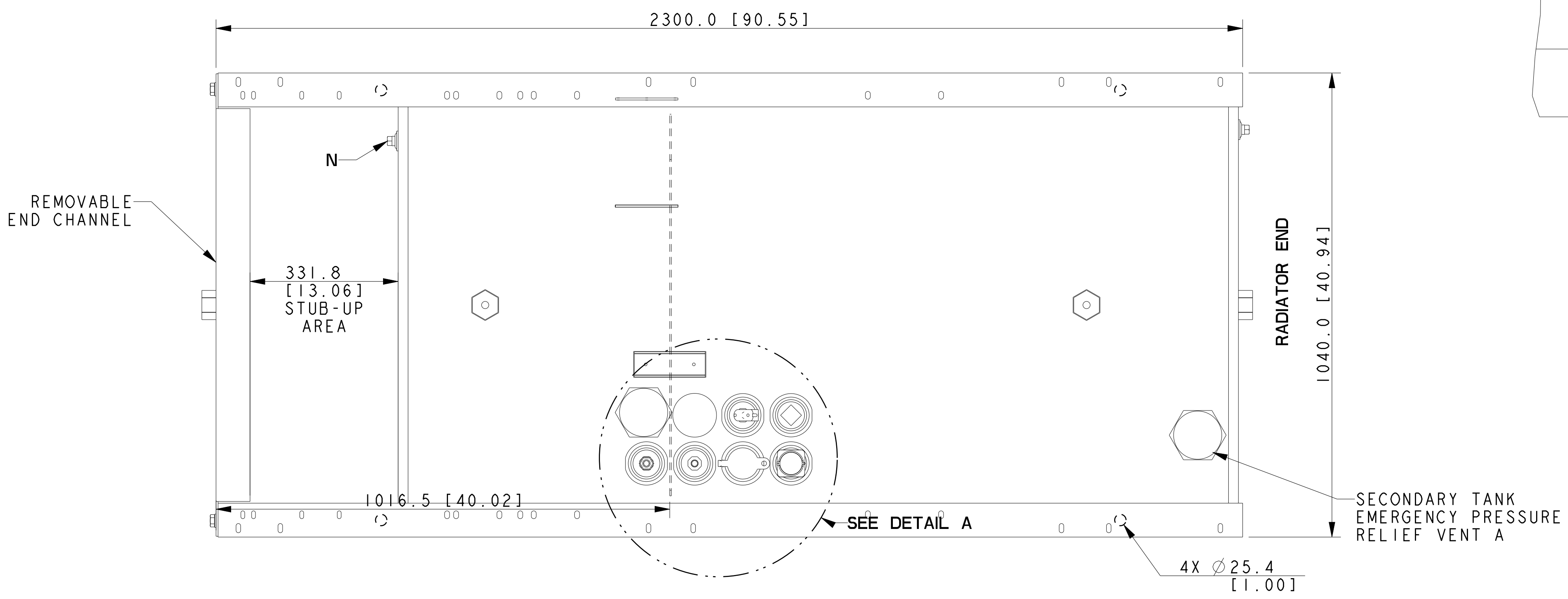


MODEL	CAPACITY		WEIGHT		HEIGHT	
	LITERS	GAL	Kg	LBS	MM	IN
20/30KW	294	78	329	726	254	10.0
20-50KW	427	113	378	833	355.6	14.0
60KW	493	130	402	886	406.4	16.0
20-50KW	626	165	450	993	508	20.0
20-60KW	792	210	523	1153	635	25.0
40-60KW	958	253	572	1260	762	30.0

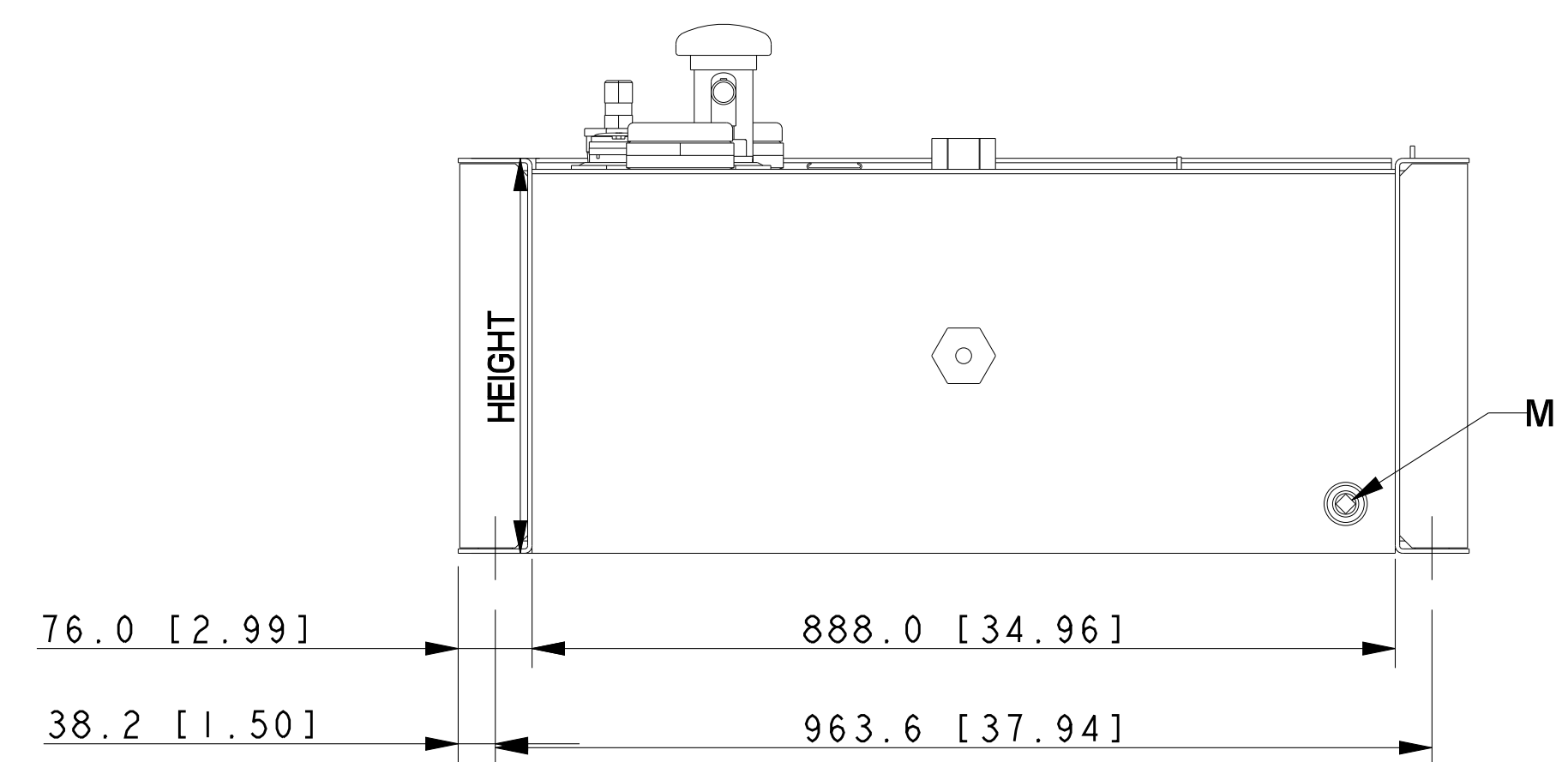


DETAIL A
SCALE 0.30

- TANK FITTINGS:**
- A. 3" NPT EMERGENCY VENT FITTING PER NFPA 30 WITH VENT CAPS (QTY 2).
 - B. 2" NPT FUEL FILL FITTING WITH LOCKABLE CAP AND 2" RISER.
 - C. 2" NPT FUEL LEVEL GAUGE FITTING WITH DIRECT READING MECHANICAL GAUGE.
 - D. 2" NPT NORMAL VENT FITTING WITH MUSHROOM VENT CAP AND 5" RISER.
 - E. 2" NPT FITTING FOR REMOVABLE ENGINE SUPPLY DIP TUBE (3/8" NPT FEMALE WITH CHECK VALVE).
 - F. 2" NPT FITTING FOR REMOVABLE FUEL RETURN DIP TUBE (3/8" NPT FEMALE).
 - H. 2" NPT FOR LOW LEVEL SWITCH (SET AT 50% FULL, SILICONE PACKED).
 - J. 2" NPT ADDITIONAL FITTING FOR OPTIONAL ACCESSORY (INSTALL STEEL 2" NPT PIPE PLUG).
 - M. 1/2" NPT BASIN DRAIN (INSTALL STEEL 1/2" NPT PIPE PLUG).
 - N. 1/2" NPT FOR FUEL IN BASIN SWITCH (INSTALL STEEL 1/2" NPT PIPE PLUG).



NOTE:
MUST USE BAR FOR LIFTING
ON 67 GAL. TANK.



NOTE:
FOR FURTHER TANK DETAIL
SEE INDIVIDUAL DRAWINGS.

20 MODEL, 60HZ, 4P4
30 MODEL, 60HZ, 4P5/4P7/4Q4
40 MODEL, 60HZ, 4P5
50 MODEL, 60HZ, 4P7/4P8/4Q10
60 MODEL, 60HZ, 4P8/4P10/4V7
RECONNECTABLE
IMPROVED MOTOR STARTING (IMS) RECONN. & 600V ALTERNATORS
JOHN DEERE 4024TF/4024HF/5030HF, TIER III

DIMENSIONS IN [] ARE ENGLISH EQUIVALENTS.

REV	DATE	ON COMPOSITE DWGS. SEE PART NO. FOR REVISION LEVEL	BY	UNLESS OTHERWISE SPECIFIED - 1) DIMENSIONS ARE IN MILLIMETERS 2) TOLERANCES ARE:	DATE
-	3-6-08	NEW DRAWING [GV10154]	CFW	X.XX ± 0.25	
A	5-29-08	(D-8) LITERS CAPACITIES UPDATED, (C-7/8) STUB-UP AND REMOVABLE END CHANNEL NOTED, (A-1) FITTING "M" IDENTIFIED [GV10235]	CFW	X.X ± 1.0 X.X ± 1.5 ANGLES ± 0° 30' MAX.	
B	10-27-08	(A-1) SHEET 1 OF 2 WAS 1 OF 1 [86488-3]	DJG	THIRD ANGLE PROJECTION	
C	11-19-08	(D-8) 40-60 KW WAS 60 KW [86220]	SAM	APPROVALS	DATE
D	9-3-09	SHEET 2 REMOVED, INFO ON ADV-7594 [88138]	SAM	DRAWN	3-6-08
E	4-15-10	(D-8) CAPACITIES AND HEIGHTS UPDATED [89453]	SAM	CHECKED	3-6-08
				APPROVED	3-6-08

KOHLER CO. METRIC PRO-E
POWER SYSTEMS, KOHLER, WI 53044 U.S.A.
THIS DRAWING IN DESIGN AND DETAIL IS KOHLER CO. PROPERTY AND MUST NOT BE USED EXCEPT IN CONNECTION WITH KOHLER CO. WORK. ALL RIGHTS OF DESIGN OR INVENTION ARE RESERVED.

TITLE: **DIMENSION PRINT**

SCALE 0.15 CAD NO. SHEET 1 of 1
DWG NO. **ADV-7430** D