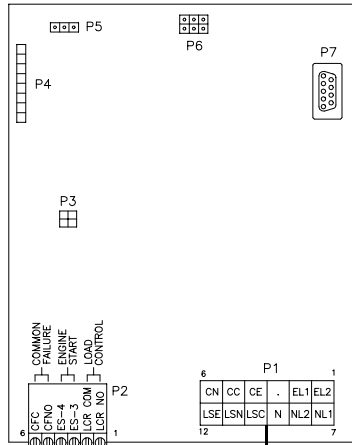
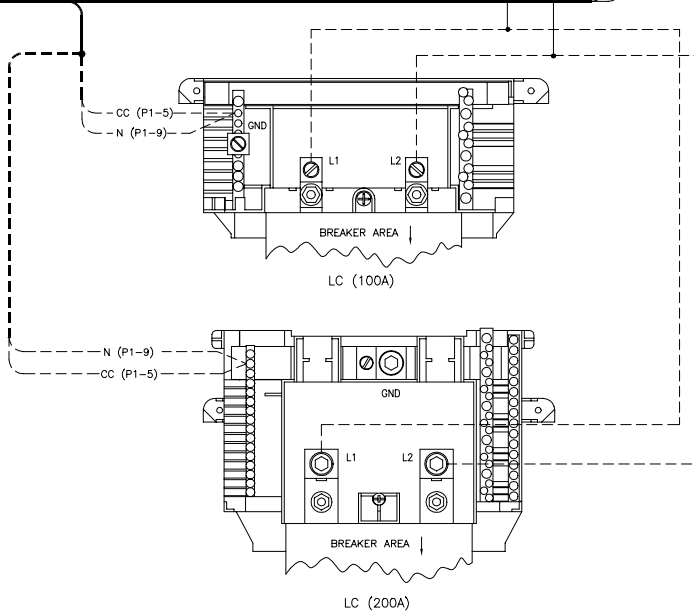
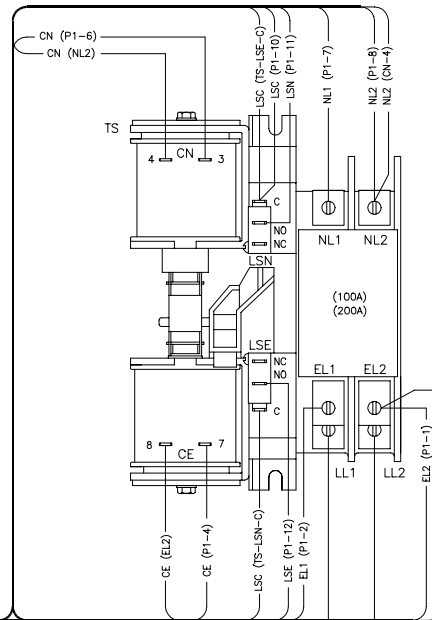


MPAC 500 MAIN LOGIC BOARD



FOR USE BY OTHERS

- P1 CONNECTIONS**
- 1 EL2 (TS-EL2)
 - 2 EL1 (TS-EL1)
 - 3 N/C
 - 4 CE (TS-CE-7)
 - 5 CC (LC-GND)
 - 6 CN (TS-CN-3)
 - 7 NL1 (TS-NL1)
 - 8 NL2 (TS-NL2)
 - 9 N (LC-GND)
 - 10 LSC (TS-LSN-C)
 - 11 LSN (TS-LSN-NO)
 - 12 LSE (TS-LSE-NO)



REV	DATE	REVISION	BY
D	2-18-05	(A & B-3,-4) LOAD CONNECTIONS REVISED TS-EL1 TO LC-L1 (200A) WAS TS-L1 TO LC-L2 (200A); TS-EL2 TO LC-L2 (200A) WAS TS-EL2 TO LC-L1 (200A) [74426]	DFS
E	3-31-09	(C-B) P2: PIN 1 & 6 DESIGNATORS ADDED, "COMMON FAILURE" TERMINAL FUNCTION MOVED FROM PINS 1 & 2 TO PINS 5 & 6. "LOAD CONTROL" TERMINAL FUNCTION MOVED FROM PINS 5 & 6 TO PINS 1 & 2, TERMINAL DESCRIPTIONS REVISED [74777]	DFS

LEGEND
 LC - LOAD CENTER
 P(#)- CONNECTOR
 TS - TRANSFER SWITCH/CONTACTOR

FOR SCHEMATIC SEE GM37649

MPAC 500
 OPEN TRANSITION
 100A ATS
 200A ATS
 W/ LOAD CENTER

APPROVALS	DATE	SCALE	///	DWG NO.	SHEET
DESIGNED JS	7-15-04			GM37650.DWG	1-1
APPROVED JS	7-15-04			GM37650	D

KOHLER CO.
 POWER SYSTEMS, KOHLER, WI 53044 U.S.A.
 THIS DRAWING IS ISSUED AND CONTROLLED BY KOHLER CO. PROPERTY AND NOT BE USED EXCEPT IN CONNECTION WITH KOHLER CO. WORK. ALL RIGHTS OF DESIGN OR INVENTION ARE RESERVED.

DIAGRAM, WIRING